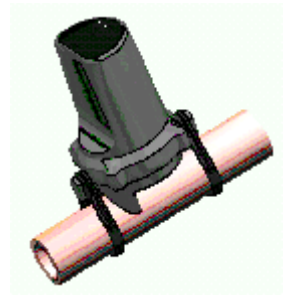


MLOG

Installation Instructions for Logger Units



Installation of MLOG logger units is quick and easy.

1. Equipment needed for installation: 1 logger unit, 2 o-rings or 2 cable ties. O-rings install easily and provide reliable long-term mounting of the MLOG. Cable ties are an acceptable alternative provided care is taken during installation as described below in Step 4.



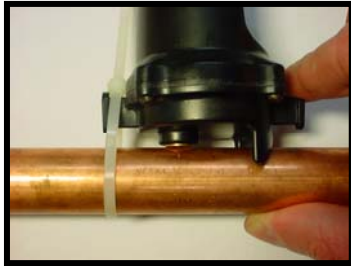
2. Preparation of the Pipe: Wipe off any dust or dirt to facilitate direct contact with the brass stud of the logger.
3. MLOG Orientation: The logger unit should be placed vertically (with the label facing up as shown below). It is mounted on a horizontal service line on the street side of the meter. The flat part of the logger housing faces the meter as shown below:



4. Installation Using O-Rings: Hold the logger in place making sure the brass stud on the bottom of the logger makes complete contact with the service line. Then connect the o-ring to the tab on one side of the logger and wrap the o-ring around the pipe and attach to the same tab.



5. Installation Using Cable Ties: Hold the logger in place making sure the brass stud on the bottom of the logger makes complete contact with the service line. First attach the side of the logger with the brass stud, being careful not to over-tighten the cable tie. Then hold the logger down so the brass stud is properly positioned while attaching the other cable tie.



Important: Make sure the brass stud is in complete contact with the pipe surface.

Proper Logger Placement – A thin piece of notebook paper will not fit between brass stud and pipe.



Improper Logger Placement – The brass stud is not completely touching the pipe.

